

FEATURES

Recessed LED downlight, O3 series.

Housing

The integrated body structure provides strong heat dissipation.

Reflector

NGR(Non Glare Reflector) Technology providing comfort and quality light to reduce stress. (UGR<19)

(75° only with white reflector)

Dust & Scratch proof reflector.

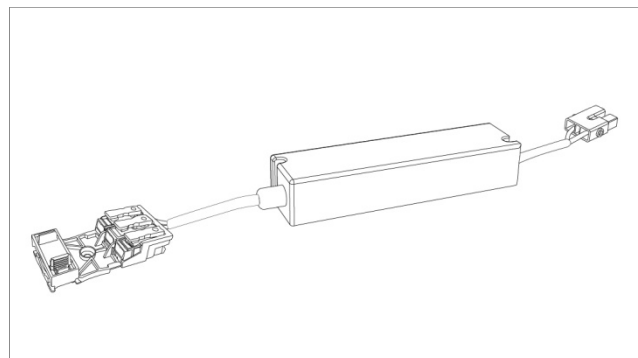


Product ordering number **11300C-827H-010-040**
11300C-830H-010-040
11300C-840H-010-040

SPECIFICATIONS

INDEX		DATA
DIMENSION	mm	Ø96 X H70
WEIGHT	Kg	0.3
OPERATING VOLTAGE	V	AC 100~240V
POWER CONSUMPTION	W	8.5 (with power supply unit)
OUTPUT POWER	W	7.5
COLOR TEMPERATURE	K	2700 / 3000 / 4000
LUMINOUS FLUX	lm	770
LOR	-	0.82
COLOR RENDERING INDEX	Ra	Over 80
BEAM ANGLE	°	40
IP RATING	-	20
STORAGE HUMIDITY	%	20% ~ 70%
STORAGE TEMPERATURE	°C	-40°C ~ +50°C
OPERATING TEMPERATURE	°C	-20°C ~ +50°C

SMPS

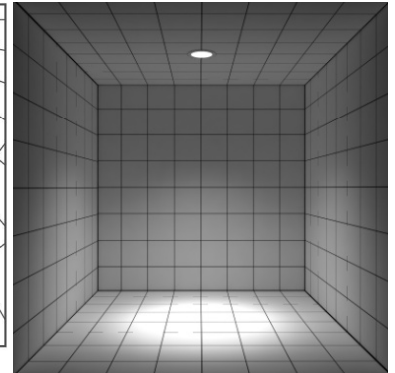
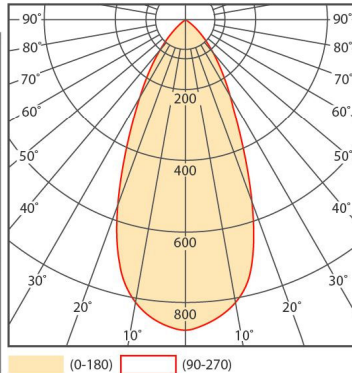
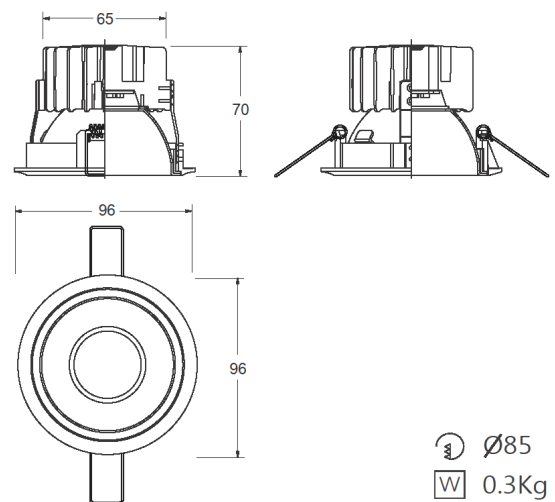
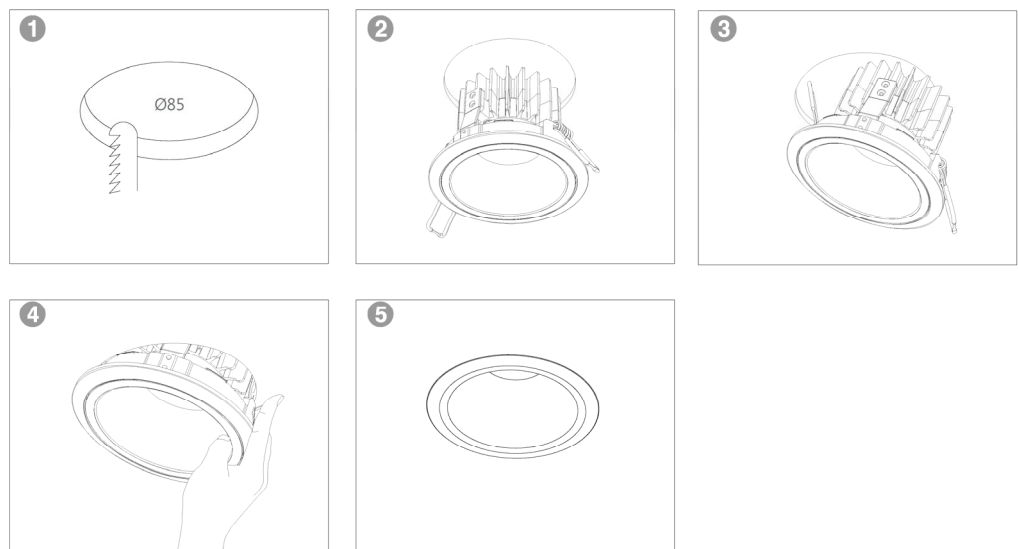


INDEX	ORDER NUMBER	NOTE
ON/OFF	80001	
1-10 Dimming	81000	
DALI Dimming	82000	
ON/OFF	80005	JAPAN
PWM Dimming	84000	JAPAN
DALI Dimming	82020	JAPAN
Triac Dimming	83009	AC 100~120V
Triac Dimming	83007	AC 220~240V

PHOTOMETRIC DATA

UGR =17.8

40°		
m	Ø(m)	lux(center/side)
1	0.86	876/411
2	1.72	219/102
3	2.58	97/45

**DRAWING DATA****INSTALLATION INSTRUCTIONS****NOTES****Attention** Read carefully before installing.

The safety of this fixture is guaranteed only if you comply with these instructions. Save these instructions for future use.

The operating temperature is between -20°C and +50°C.

ALTOALTO LIGHTING CO., LTD www.alto.co.kr

H-Tower, 15, Beodeunaru-ro, Yeongdeungpo-gu, Seoul, Republic of Korea

Tel. 82.2.2176.1746 Fax. 82.2.2176.1781 altoled@alto.co.kr